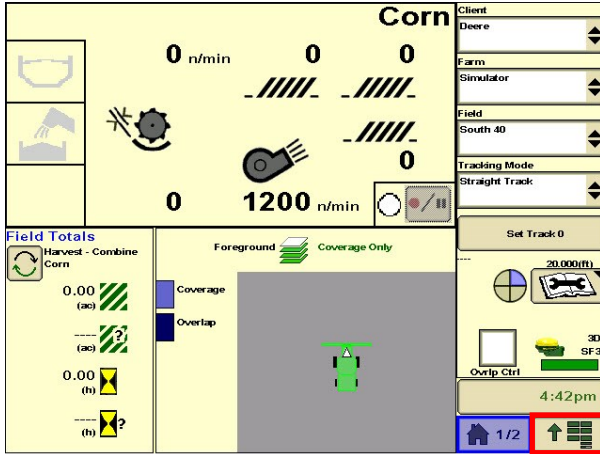
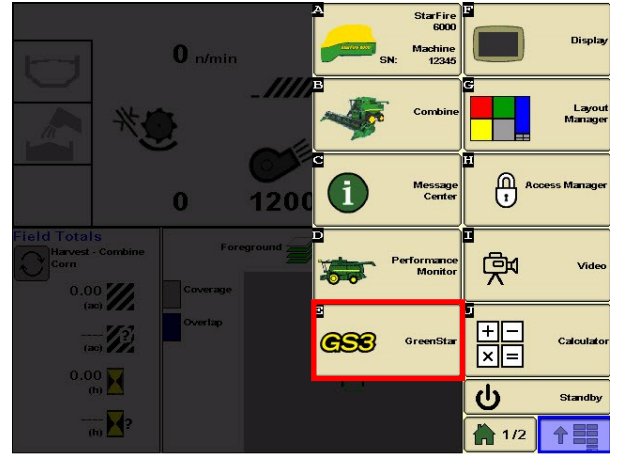


GREENSTAR: A+B STRAIGHT TRACK SETUP

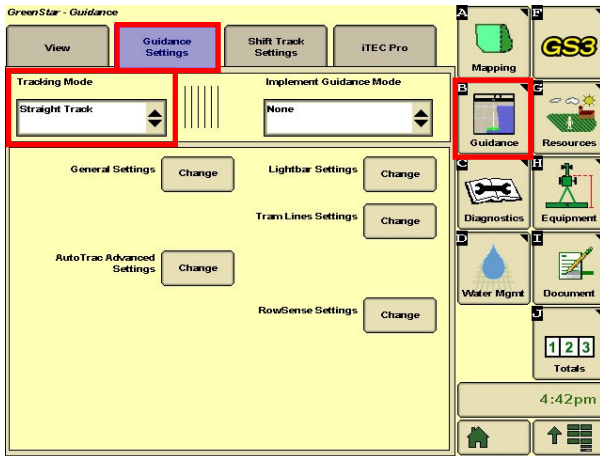
1 Select 'Menu' at the bottom right-hand corner.



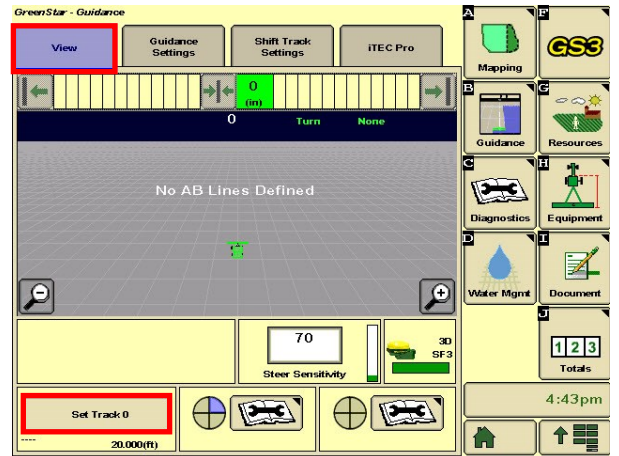
2 Select 'GreenStar'.



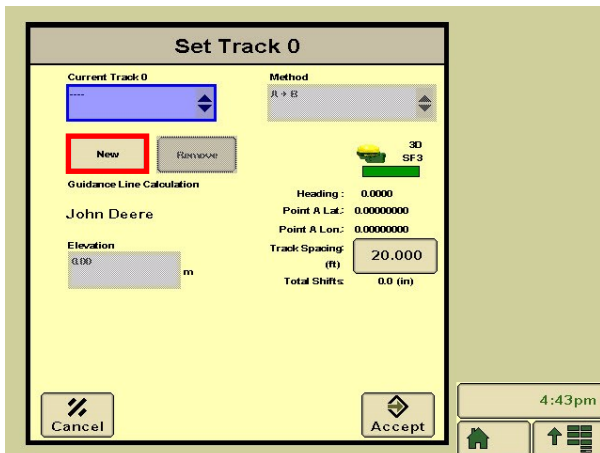
3 Select 'Guidance', then 'Guidance Settings'. Set your Tracking Mode to 'Straight Track'.



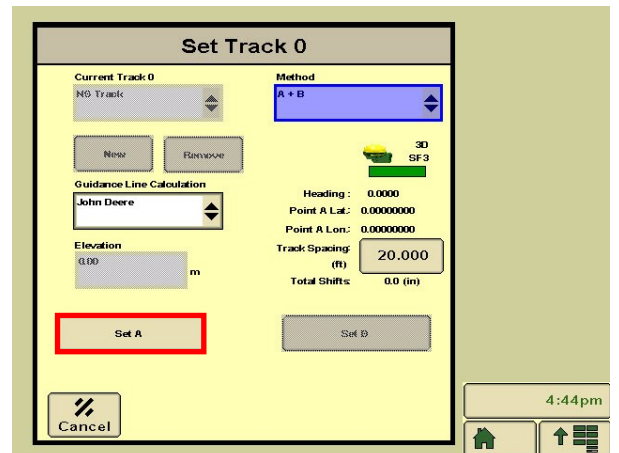
4 Select 'View', then 'Set Track 0'.



5 Select 'New', and enter a Track Name.

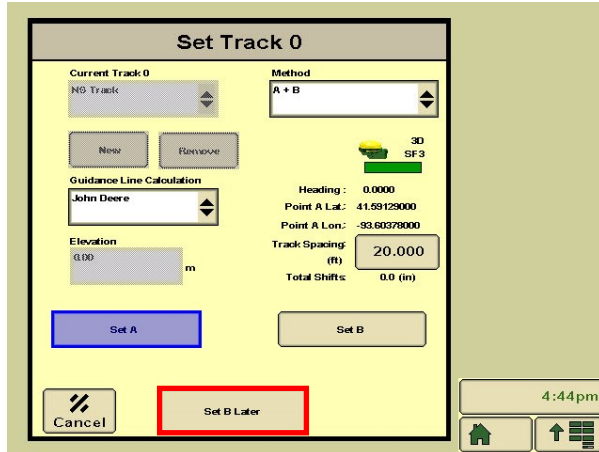


6 Select 'Set A'.

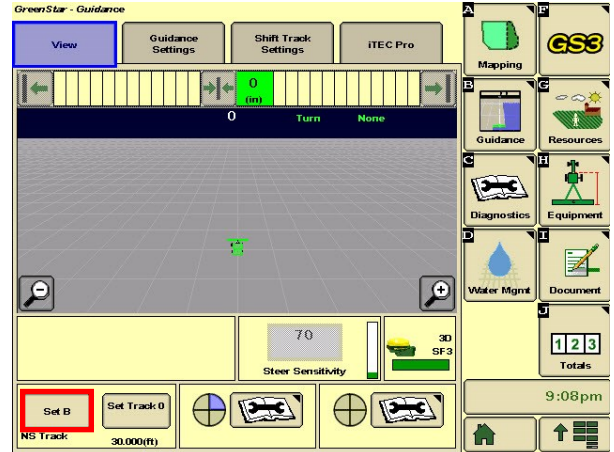


GREENSTAR: A+B STRAIGHT TRACK SETUP

7 Select 'Set B Later'.



8 Drive at least 10 feet, then select 'Set B'.



9 Turn your steering 'On'. You are now ready to press the Resume Switch.

