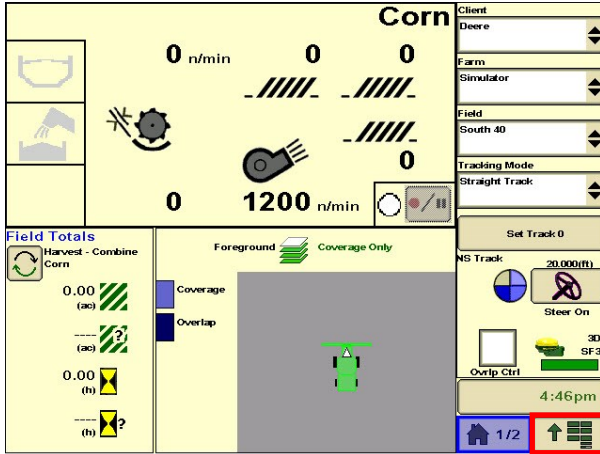
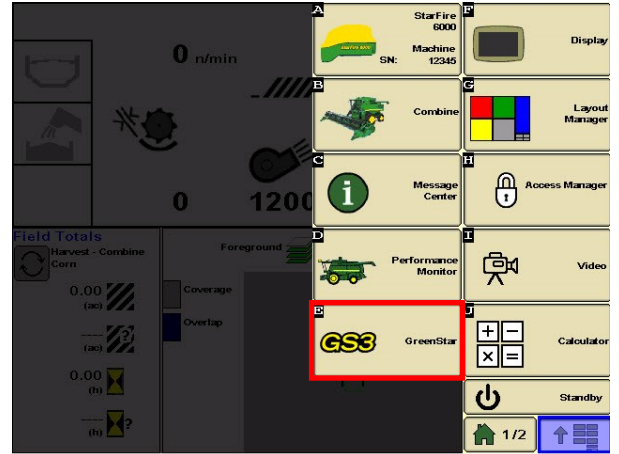


GREENSTAR: AB CURVE SETUP

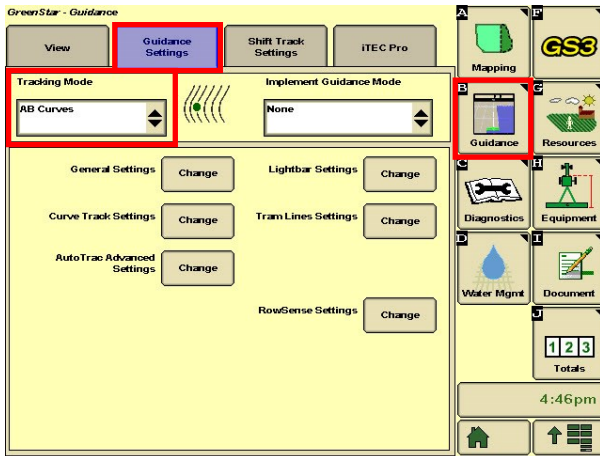
1 Select 'Menu' at the bottom right-hand corner.



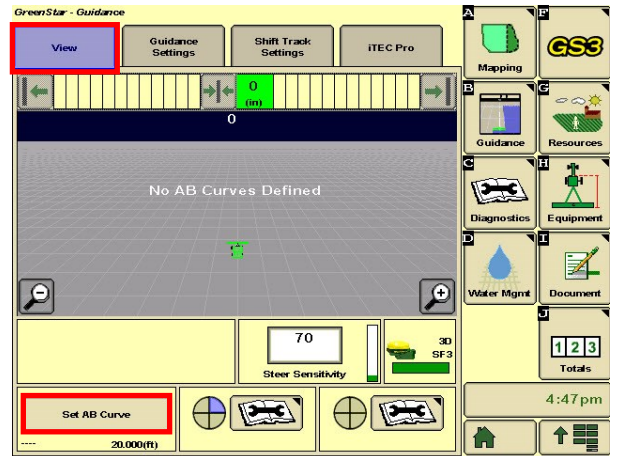
2 Select 'GreenStar'.



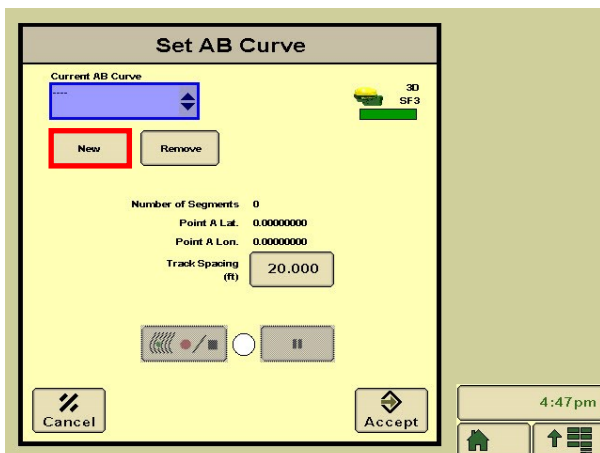
3 Select 'Guidance', then 'Guidance Settings'. Set your Tracking Mode to 'AB Curves'.



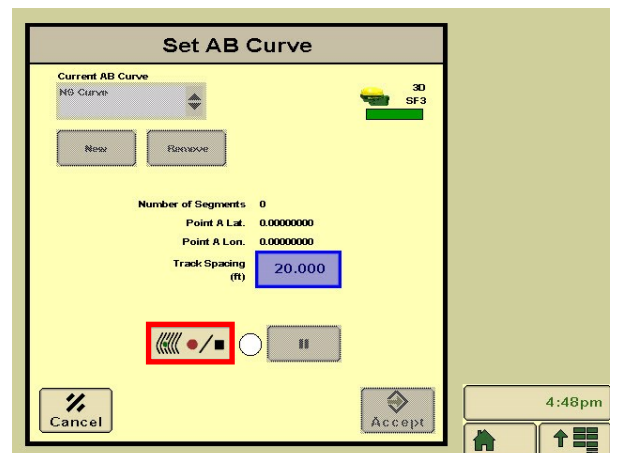
4 Select 'View', then 'Set AB Curve'.



5 Select 'New', and enter a Track Name.

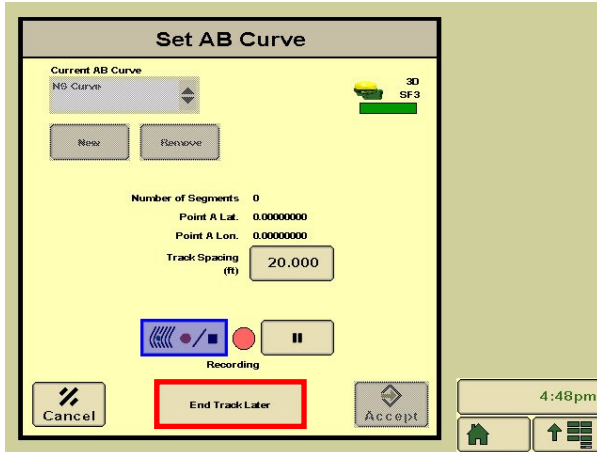


6 Select 'Record'.

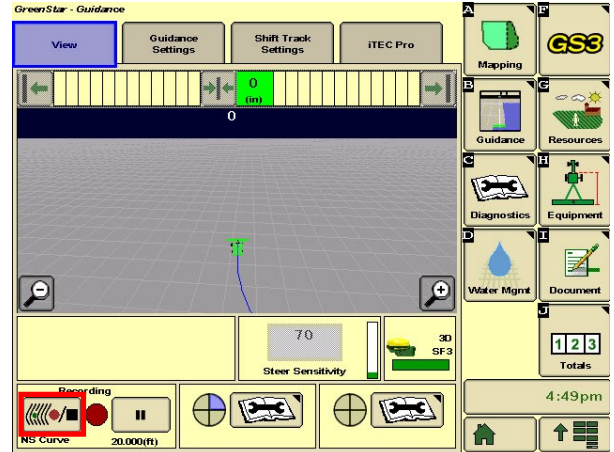


GREENSTAR: AB CURVE SETUP

7 Select 'End Track Later'.



8 Drive your pass, then select 'Record'.



9 Turn your steering 'On'. You are now ready to press the Resume Switch.

