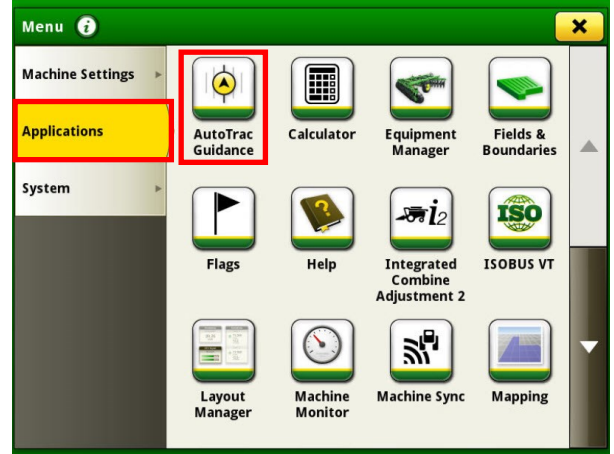


# GEN 4: BOUNDARY TRACK SETUP

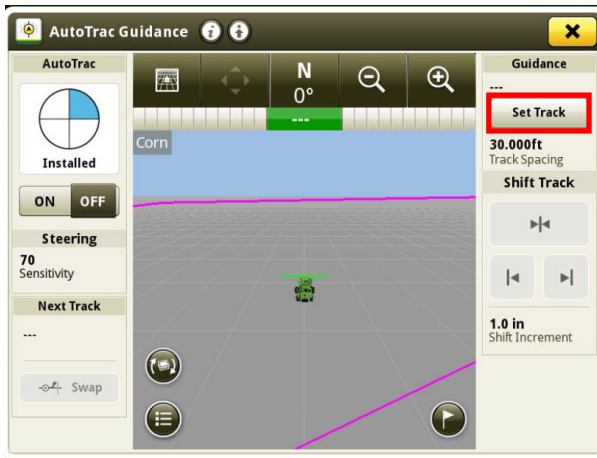
1 Select 'Menu' at the bottom right-hand corner.



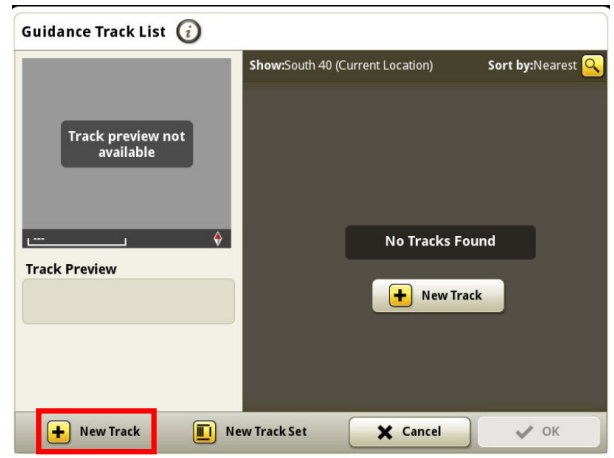
2 Select 'Applications', then 'AutoTrac Guidance'.



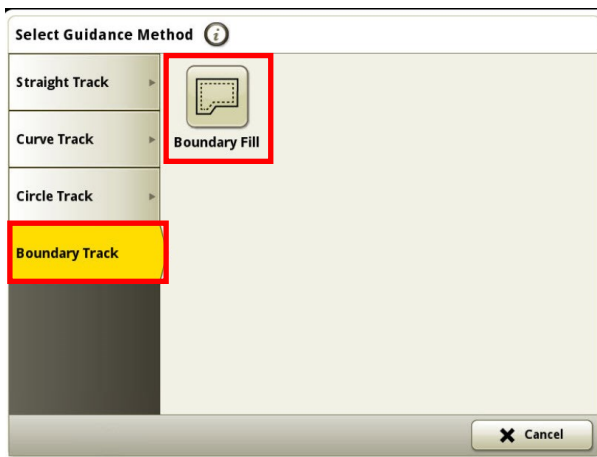
3 Select 'Set Track'.



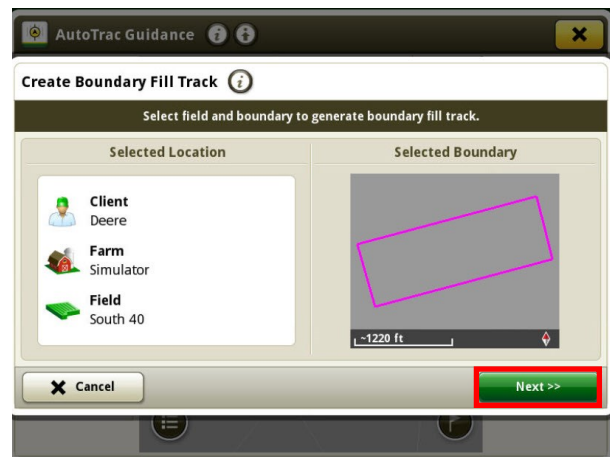
4 Select 'New Track'.



5 Select 'Boundary Track', then 'Boundary Fill'.

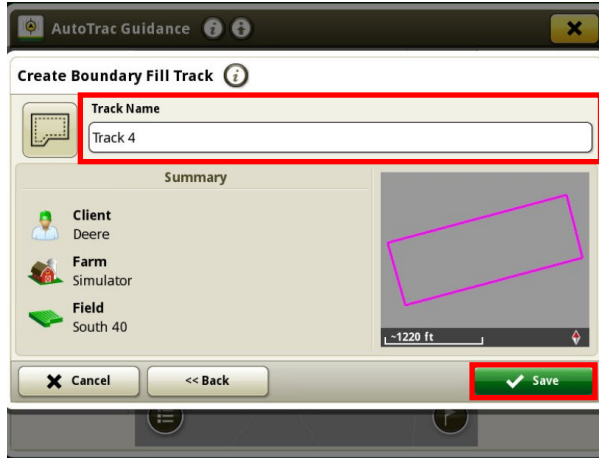


6 Confirm your field boundary, then select 'Next'.



# GEN 4: BOUNDARY TRACK SETUP

7 Enter a Track Name, then select 'Save'.



8 Turn your steering 'On'. You are now ready to press the Resume Switch.

