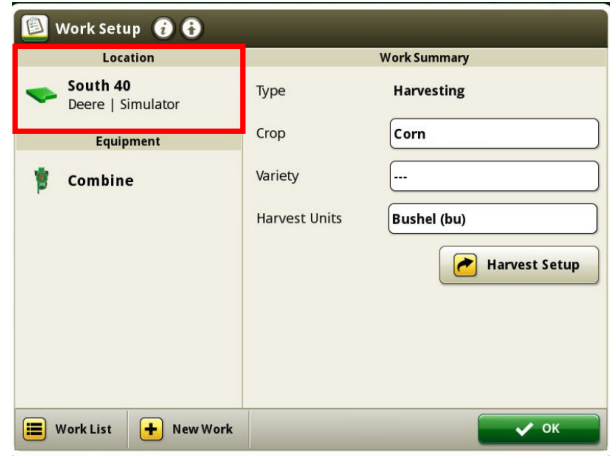


GEN 4: HARVEST DOCUMENTATION SETUP

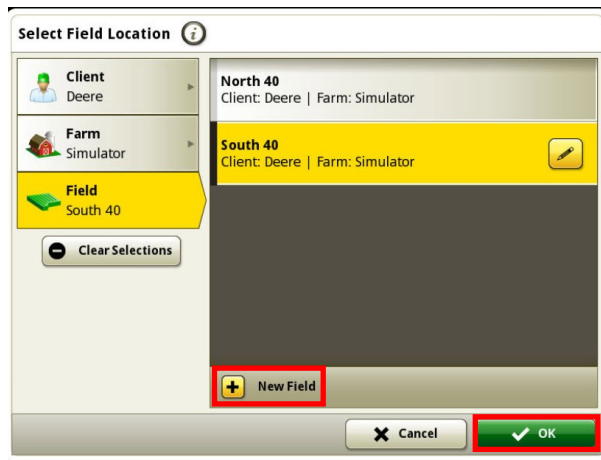
1 Select 'Setup' at the bottom left-hand corner.



2 Select 'Location'.



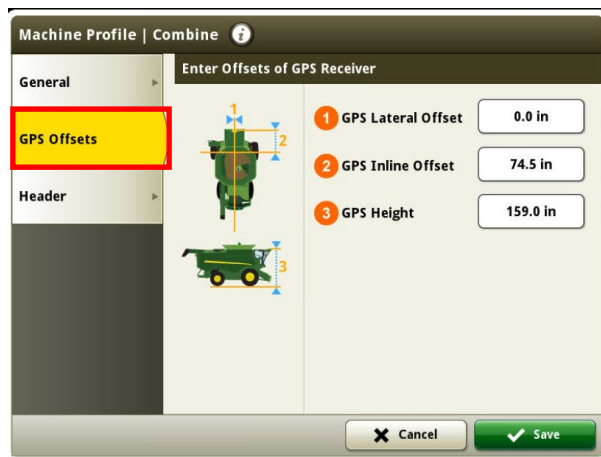
3 Select your Client, Farm, & Field, or 'New Field' to add a new location. Select 'OK'.



4 From Step 2, select 'Equipment'. Select 'Combine'.



5 Enter your Machine GPS Offsets.

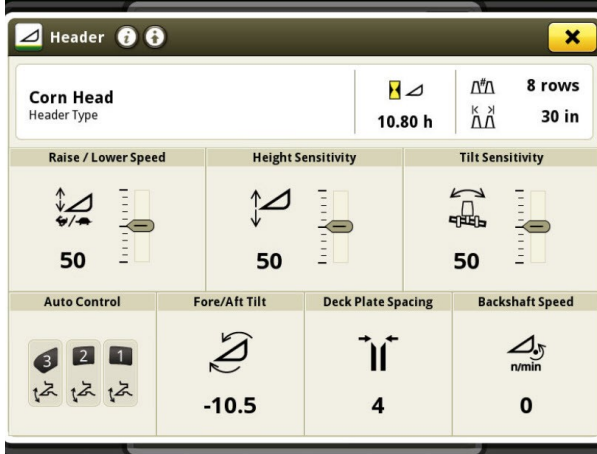


6 Enter your Header Offsets. Select 'Save'.

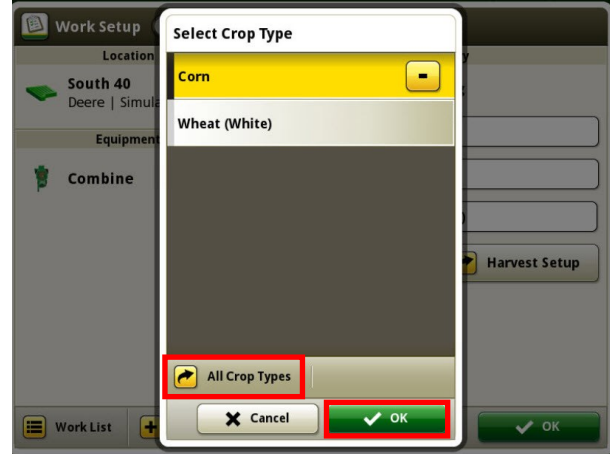


GEN 4: HARVEST DOCUMENTATION SETUP

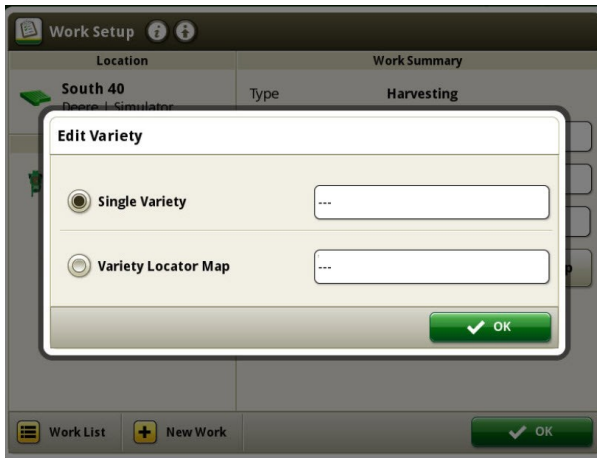
7 From Step 4, select 'Header Settings'. Confirm your header type, width, and other settings.



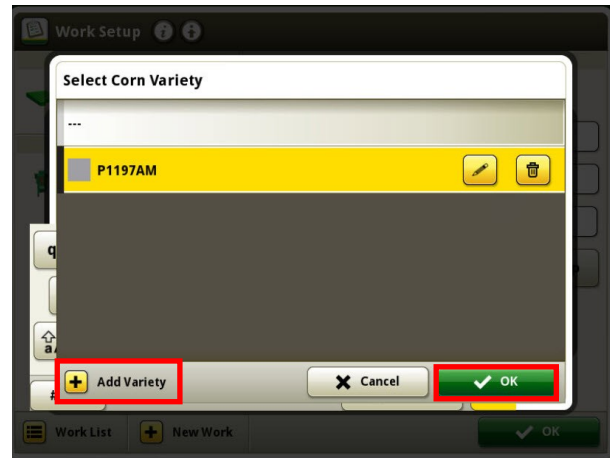
8 From Step 2, select 'Crop Type'. Select your crop, then select 'OK'.



9 From Step 2, select 'Variety'. Choose to manually enter a variety, or select Variety Locator if using a file.



10 For manual entry, choose a variety from your list or 'Add Variety'. Select 'OK'.



11 From Step 2, choose 'Harvest Setup'. Verify your crop conditions and machine settings.

