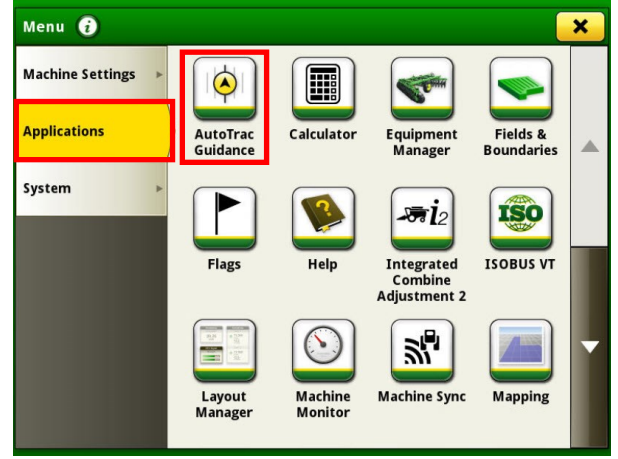


GEN 4: ADAPTIVE CURVE SETUP

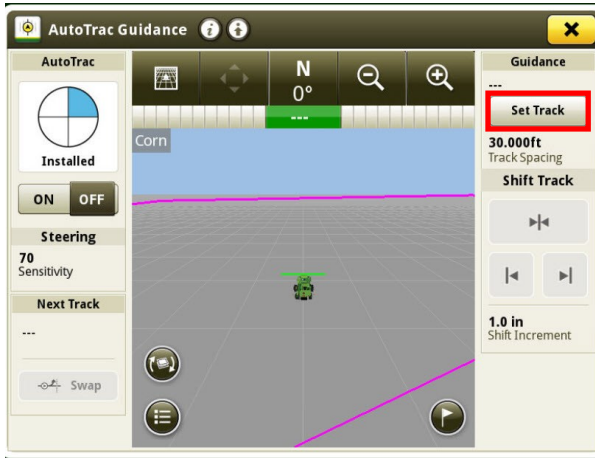
1 Select 'Menu' at the bottom right-hand corner.



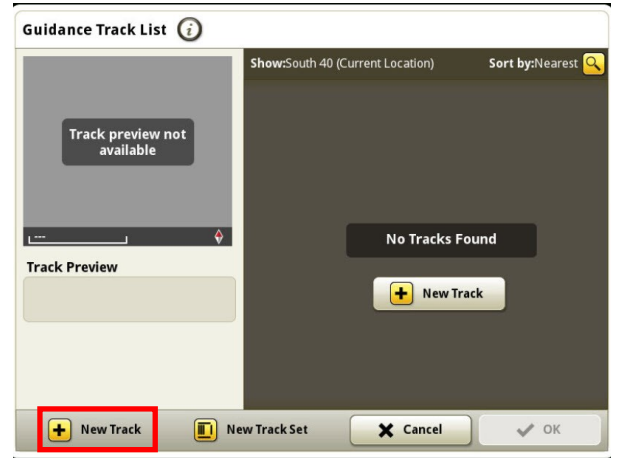
2 Select 'Applications', then 'AutoTrac Guidance'.



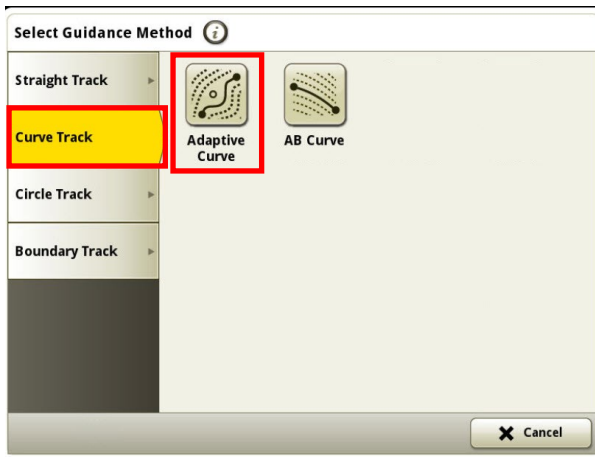
3 Select 'Set Track'.



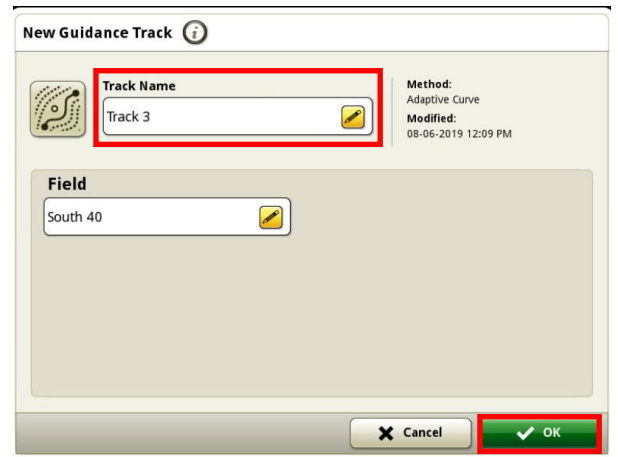
4 Select 'New Track'.



5 Select 'Curve Track', then 'Adaptive Curve'.

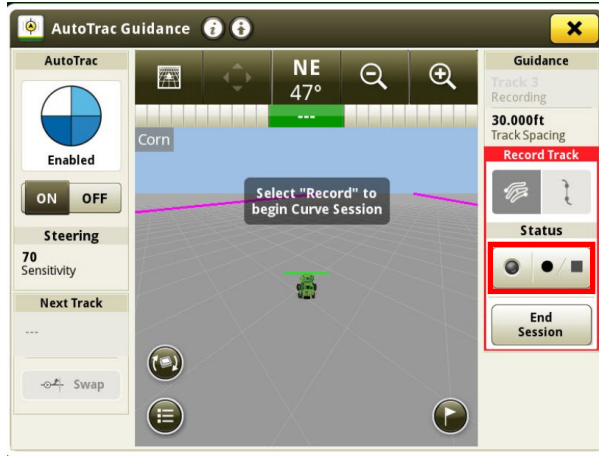


6 Enter a Track Name, then select 'OK'.



GEN 4: ADAPTIVE CURVE SETUP

7 Select 'Record'.



8 Turn your steering 'On'. You are now ready to record your curve.

